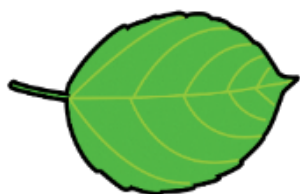
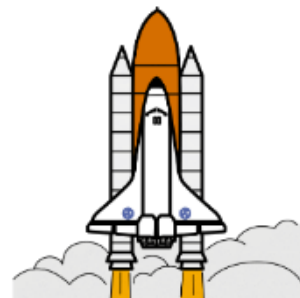
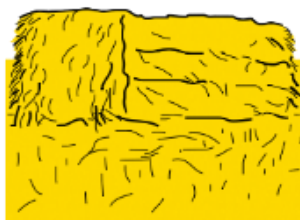
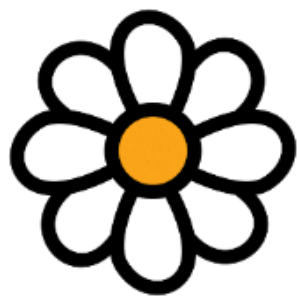


f - position initiale (images)



*f - position initiale (photos)*



*f - position initiale (mots)*

fourmi

fleur

flamme

fontaine

fenêtre

flèche

fille

framboise

foin

fraise

fauteuil

fusée

foire

fée

fromage

fantôme

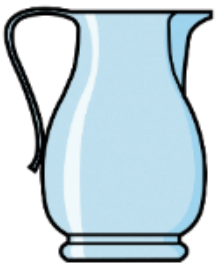
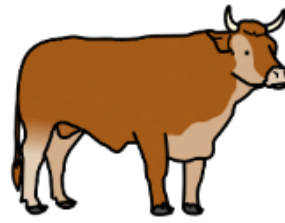
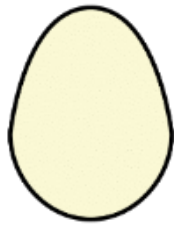
feuille

four

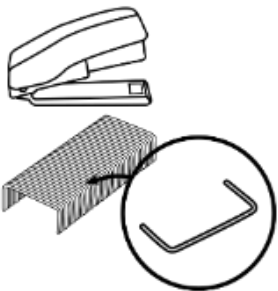
fourchette

flûte

f - position finale (images)



9

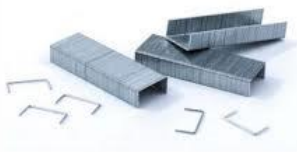




*f - position finale (photos)*



9



*f - position finale (mots)*

surf

œuf

bœuf

truffe

carafe

girafe

chef

sauf

pouf

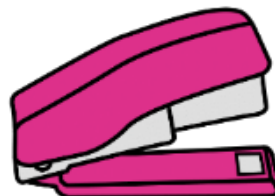
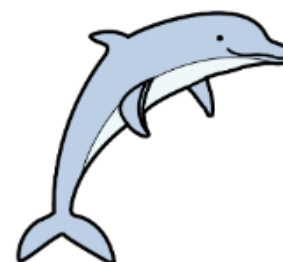
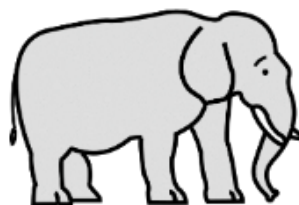
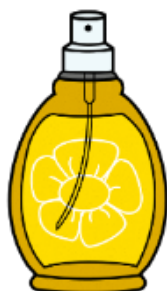
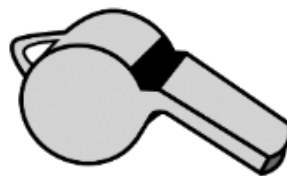
neuf

golf

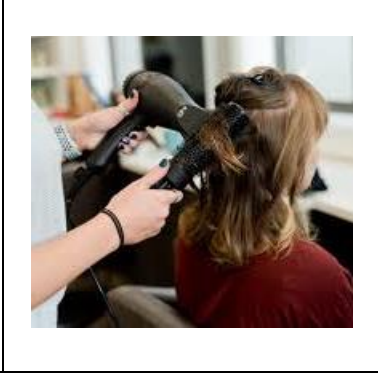
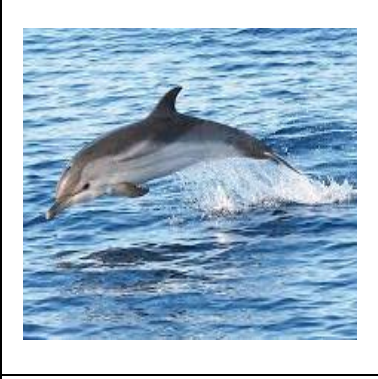
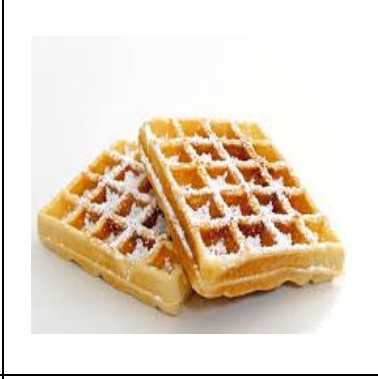
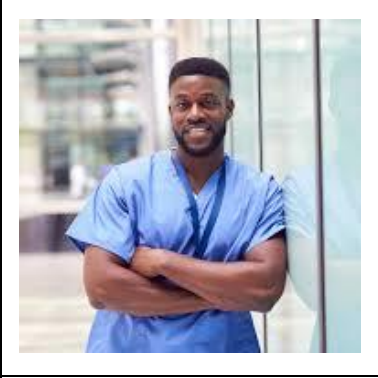
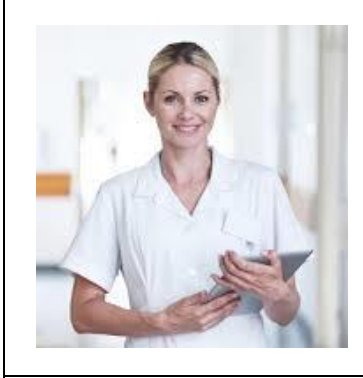
elfe

agrafe

f - position médiane (images)



f - position médiane (photos)





*f - position médiane (mots)*

café

montgolfière

sifflet

gyrophare

moufle

trèfle

porte-feuille

gyrophare

infirmière

parfum

muffin

infirmier

confiture

gaufre

éléphant

dauphin

coffre

coiffeur

agrafeuse

cafard